

# Significance of Paper Properties on Print Quality in CIJ Printing

*Jali Heilmann, Ulf Lindqvist  
VTT Information Technology  
Espoo/Finland*

## Abstract

In this paper, we discuss the relationship between a high-speed continuous ink jet system and the printing substrate. Dense surfaces, with different kinds of topographies, were used to evaluate the importance of the droplet impact and spreading without capillary penetration. Commercial papers were also used to evaluate the potential of the existing grades and to find the key performance parameters.

A laboratory-scale testing environment was used for the high-speed imaging of ink jet drops. The impact, spreading, absorption and drying of the ink droplets on the samples can be observed and analysed in this testing environment on the time scale of microseconds up to several minutes. The image technical performance of the samples was measured with an image analysis system which was specially designed for the analysis of print quality with non-impact printing techniques.

## Introduction

This study is a part of the project "Dynamic Interactions and Image Quality in Ink Jet Printing" which is one of the research projects run by VTT Information Technology between 1995 and 1999. The project focusses on the high-speed ink jet printing methods of the future. The aim is to analyse and model the interactions between ink and paper in the Continuous Ink Jet technique (CIJ), and to develop and modify testing methods for ink jet substrates.

Although drop on demand printing has become the most dominant technology in low end printing, CIJ systems are the technology of the future, especially in high-speed digital colour printing applications. A better knowledge of the basic mechanisms of dynamic interaction is needed to produce a more reliable and appropriate specification of the quality demands for the paper grades and it would be useful in the product development of the paper industry. The purpose of this study is to clarify these paper-based interaction mechanisms.

It is well known that the absorption properties of paper have a distinct effect on the drying and spreading of aqueous inks and in this way on the print quality. The importance of paper roughness is often also stressed, because it affects the final size and shape of the dot. However, it is difficult to discern the relevance of these two

factors in commercial paper grades. It is possible to decrease the surface roughness of paper by calendering, but then also the total pore volume will decrease.

To overcome this problem, two plastic sheets, with different topographies, were used to evaluate the importance of the mechanical droplet impact and spreading without any capillary penetration. The adjusted process parameters were the distance of the printing nozzle from the surface, which affects the impact velocity of the drop, and the velocity of the printing surface. Moreover, eight commercial coated and uncoated papers were selected, and the dynamic development of the image technical properties was measured on different time scales.

**Table 1: Test materials**

Sample	Coating	IGT oil absorption	PPS roughness
Plastic 1			2.3
Plastic 2			4.9
Paper 1	Coated	8.9	3.4
Paper 2	Uncoated	21.4	3.8
Paper 3	Uncoated	12.5	3.7
Paper 4	Coated	7.8	1.2
Paper 5	Uncoated	22.6	8.8
Paper 6	Coated	7.9	1.9
Paper 7	Coated	7.7	1.8
Paper 8	Coated	7.3	1.1

## Experimental Work

In this study, the ink drops were generated by an industrial multi-deflection CIJ device. The inner diameter of the nozzle was 70  $\mu\text{m}$  and the drop production rate 77 kHz. The exit velocity of the drops was 18 m/s. The recommended printing distance for the printer was 12-17 mm. The viscosity of the water-based ink was 3.3 cP. A motor-driven, balanced drum was set up to move the substrate. The peripheral velocity of the paper-carrying cylinder was adjusted between 0-8 m/s.

The test substrates consisted of two plastic sheets and eight commercial paper grades. Some properties of the test materials are shown in Table 1. The plastic sheets were selected so that the roughness of the first sample (Plastic 1)

approaches the roughness of coated paper and the roughness of the second sample (Plastic 2) approaches the roughness of uncoated paper. The topography of Plastic 2 was strongly orientated, as seen in Figure 1.

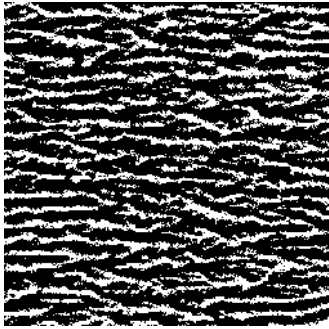


Figure 1. The strongly orientated topography of the plastic sheet.

Two test series were carried out by using the plastic sheets. In the first series, the printing nozzle was set at different distances from the surface, i.e. 1, 5, 10, 20 and 30 mm. In the second series, the distance between the surface and the nozzle was kept constant, but the speed of the rotating cylinder, to which the samples were attached, was changed. The printing distance in the speed series was 50 mm, and it was selected so that the impact speed of the drop would be as low as possible. The speeds used were 0, 2, 4, 6 and 8 m/s.

Three samples were used in the speed series. The first sample was Plastic 1. The second sample was Plastic 2 which was attached to the rotating cylinder, so that the direction of the orientation was parallel to the cross machine direction (CD). The third sample was Plastic 2 which was attached to the rotating cylinder, so that the direction of the orientation was parallel to the machine direction (MD). After printing, the image technical properties were measured by using an image analysis system, specially designed for the analysis of the print quality with non-impact printing techniques. The system consists of a microscope, a CCD camera and a PC with tailored analysis software.

The commercial paper grades were analysed in a laboratory-scale testing environment for the high-speed imaging of ink jet drops. The impact, spreading, absorption and drying of the ink droplets on the samples can be observed in this testing environment on a time scale of microseconds up to several minutes. This testing environment is based on a high-speed CCD camera (2250 frames/sec), a stroboscopic flashlight and a PC. A detailed description of the experimental arrangement has been reported earlier /1/. In this series, the printing distance was 50 mm and the printing substrate was held still. The high-speed images were analysed and the development of the image technical properties was considered on three different time scales: from 0 to 20 ms, from 0 to 200 ms and from 0 to 1,500 ms after the impact.

## Results and Discussion

### The Effect of the Printing Distance on the Print Quality

The significance of the printing distance, a process parameter which affects the striking speed of the drop, was verified by using smooth and rough plastic surfaces. The results are in Figures 2 and 3. The diameter of the dot decreases linearly when the printing nozzle is moved farther away from the surface. The dot is at all distances notably smaller on a smooth substrate. The effect of a distance adjustment is, however, greater on a rough substrate.

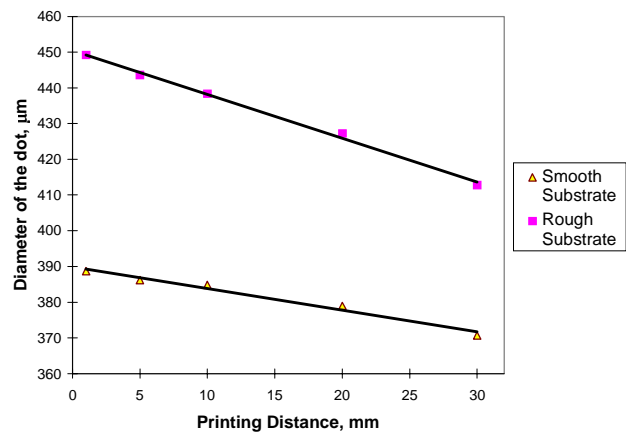


Figure 2. The diameter of the dot as a function of the printing distance.

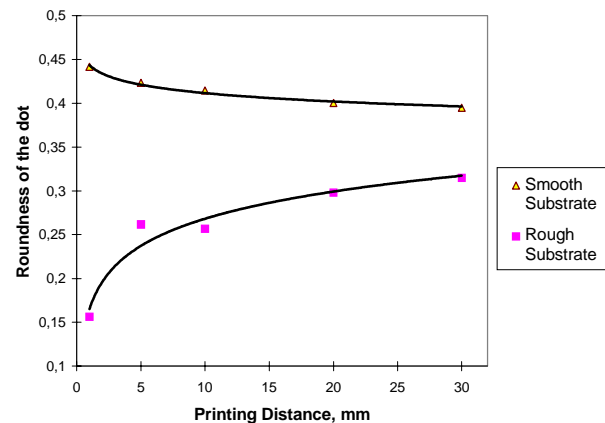


Figure 3. The roundness of the dot as a function of the printing distance.

The dot becomes rounder when the printing distance increases on a rough surface. The roundness values range from 0 to 1, so that 1 is a perfect circle. The roundness of the dot can be totally destroyed if the printing distance is small, especially with a high speed of the substrate. The study of the splashing of the ink drops has been published earlier /1/.

Quite surprisingly, the roundness of the dot decreases when the printing distance is increased on a smooth surface. An explanation for this could be that the hydrodynamic pressure of the spreading drop exceeds the weak surface forces and small irregularities of the printing substrate and creates in this way rounder dots. But the change is in any case quite small. The difference between the smooth and the rough surface decreases when the printing distance is increased. Logarithmic functions can be applied very well to the data in both cases.

**The Effect of the Printing Speed on the Print Quality**

The significance of the printing speed was assessed by using a smooth surface and two rough surfaces with different directions of orientation. The results and the polynomial fittings of the data are in Figures 4 and 5. When the printing speed is increased also the dot grows on all substrates.

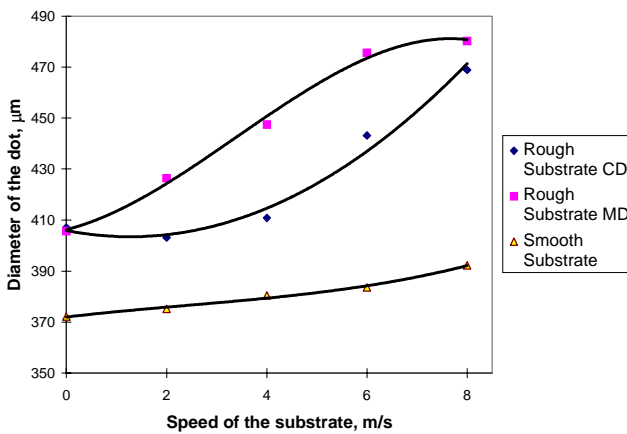


Figure 4. The diameter of the dot as a function of the speed

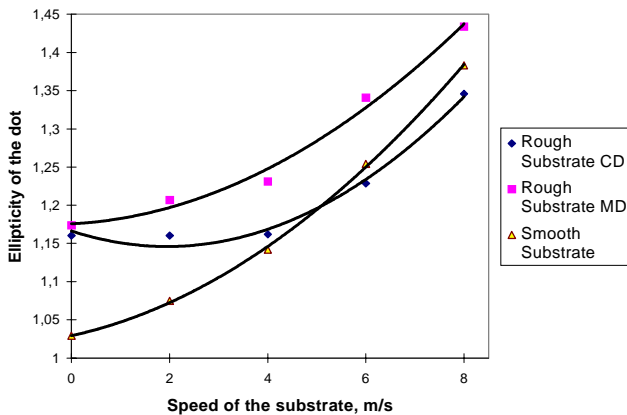


Figure 5. The ellipticity of the dot as a function of the speed.

On a rough surface with an orientation in the machine direction (MD) the diameter grows rapidly when the speed is increased and begins to decelerate after about 6 m/s. When the orientation is in the cross machine direction (CD),

the size of the dot first increases slowly and after 4 m/s it begins to grow rapidly. At a speed of 8 m/s, the differences between the two samples are small. A possible explanation for the difference is that the CD-orientated surface blocks the drop and prevents its free flow on the surface when the speed of the sample is increased. On the MD-orientated surface the liquid can flow quite freely and the size of the dot increases rapidly. Most of the total dot growth is caused by the roughness of the substrate, because on a smooth substrate the diameter of the drop grows slowly when the speed is increased.

The ellipticity of the dot increases on all substrates when the printing speed is increased. Ellipticity is the ratio of the dot width to the height of the dot. The ellipticity of the MD sample increases faster than that of the CD sample. This confirms previous conclusion: the cross-directional topography of the surface significantly impedes the flow of the liquid. The free flow of the liquid also makes the ellipticity of the dot increase very rapidly on a smooth surface.

**The Effect of Absorption on the Print Quality**

The significance of absorption and the development of the image technical properties as a function of time were evaluated by using eight commercial paper grades. The diameter of the dot within the first 20 ms is shown in Figure 6. Simple first and second degree functions could be applied very well to the data.

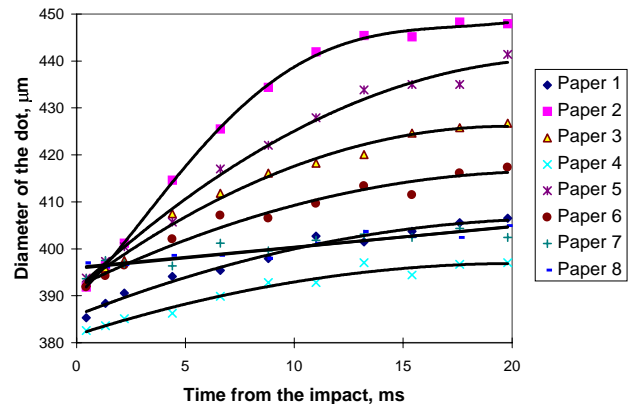


Figure 6. The diameter of the dot as a function of time.

After the impact, the drop immediately begins to spread on all paper grades. It is generally suggested that there is a so-called wetting delay, ranging from 5 ms to several seconds, before the capillary penetration begins. No sign of such a delay was found in this study. An explanation for this could be that the high kinetic energy of the CIJ droplet ensures an immediate, pressurised contact with the paper surface and in this way fast wetting. After 20 ms of the impact, there is already a difference of 50 µm in the diameter of the dot between Paper 2 and Paper 4.

The first 200 ms since the impact of the drop are shown in Figure 7. The diameter of the dot increases very rapidly in the uncoated samples 2, 3 and 5, due to the fast capillary

penetration. There are still considerable differences in the spreading times of the uncoated papers. For example, when Paper 2 spreads to its maximum size within the first 50 ms, it takes Paper 5 over 200 ms. The changes are much smaller in coated papers even though considerable differences are observed. All in all, the changes in the dot size are extremely fast. In fact, a 98% correlation can be calculated between the dot size at 120 ms and the final dot after a drying time of several hours.

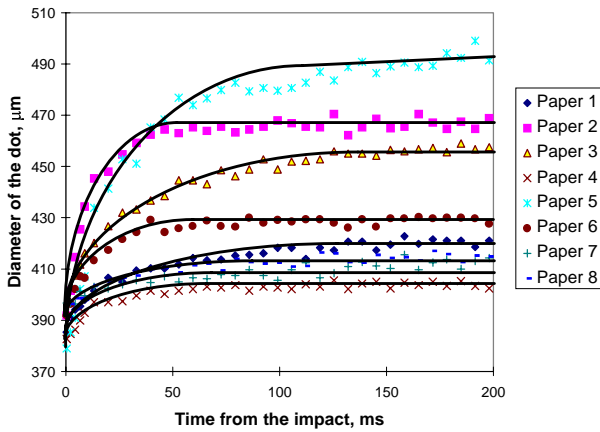


Figure 7. The diameter of the dot as a function of time.

The first 1.5 seconds of spreading are shown in Figure 8. As you can see, on this time scale there is a slow increase in the dot size on coated papers. The slow spreading continues until most of the solvent has evaporated. The percentage rate of dot increase is quite small during this time, but under dynamic conditions the slow drying causes severe bleeding, especially in multicolor processes.

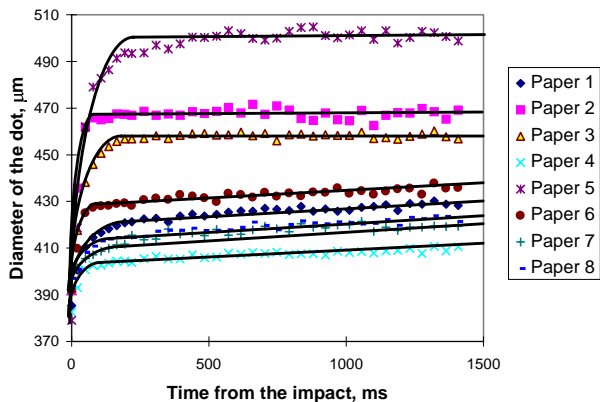


Figure 8. The diameter of the dot as a function of time.

Although the maximum size of the dot is reached within about 200 ms on uncoated papers, the intensity of the dot takes a much longer time to develop. The intensity value indicates the darkness of the print: the lower the value is the darker the print will be. When the final darkness of Paper 5

is reached after 500 ms, it takes more than three times longer for Paper 3 to reach a stable level. This is easy to explain by an examination of the papers: Paper 5 is rough and porous, a paper with fast penetration and spreading, while Paper 3 is smooth and dense. The intensity of the coated papers decreases on this time scale due to the slow spreading of the dot. Much higher darkness levels can be reached with coated papers - at the expense of slow drying.

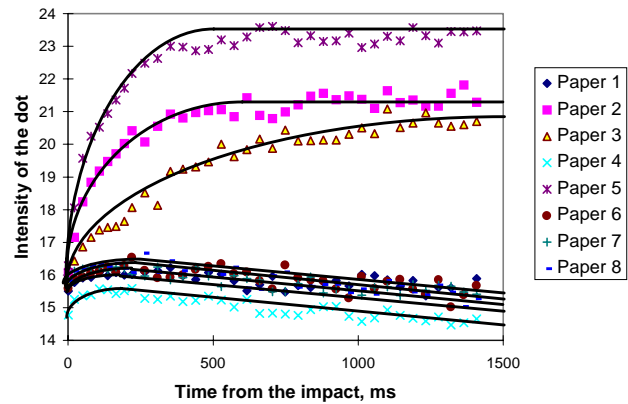


Figure 9. The intensity of the dot as a function of time.

A linear correlation (0.94) can be found between the intensity of the dot and the IGT oil absorption of the paper: the more absorbent the paper is the lower darkness the print will have.

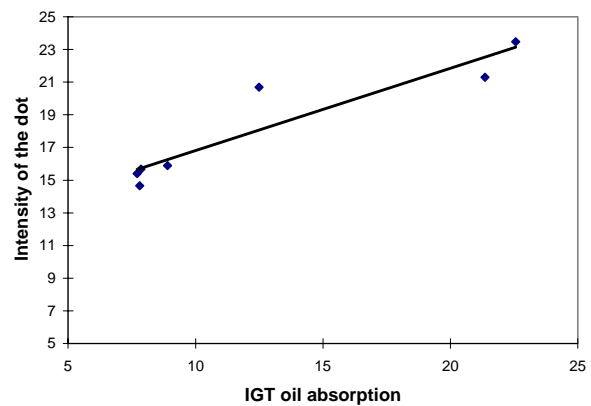


Figure 10. The intensity of the dot as a function of the IGT oil absorption.

The roundness of the dot in the first 200 ms is shown in Figure 11. The roundness decreases rapidly on uncoated papers in the first 100 ms. The decline in quality is strongest in Paper 5, where the shape of the dot is totally destroyed. Much rounder dots can be achieved with coated papers.

A linear correlation (-0.94) can be found between the roundness of the dot and the IGT oil absorption of the paper: the more absorbent the paper is the less round the dots will be.

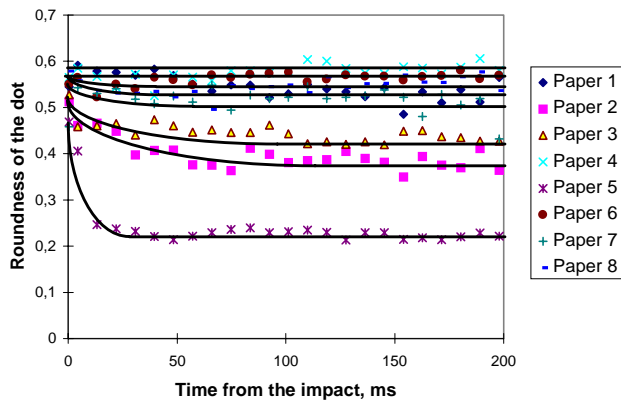


Figure 11. The roundness of the dot as a function of time.

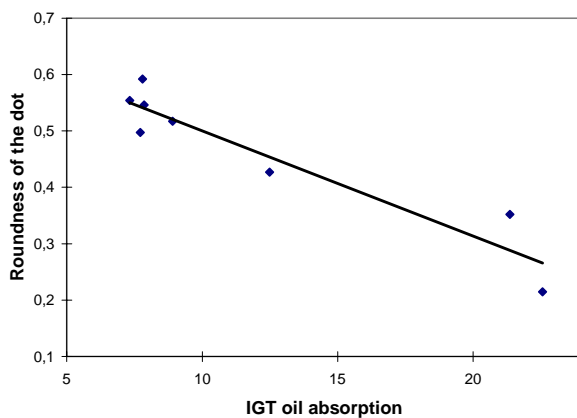


Figure 12. The roundness of the dot as a function of the IGT oil absorption.

## Conclusions

The roughness and the absorption properties of paper were found to be of great significance to the print quality in CIJ printing. Plastic sheets with different topographies were used to evaluate the mechanical droplet impact without capillary penetration. It was found under varied process conditions that the roughness and the orientation of the printing surface had a strong impact on the final size and shape of the dot.

The absorption and the development of the image technical properties of commercial paper grades were examined in a high-speed imaging test environment. The dot has found to reach almost its final size extremely fast: a 98% correlation could be calculated between the dot size at 120 ms and the final dot after a drying time of several hours. The intensity of the dot develops more slowly than the size of the dot. While the final dot size was reached in about 200 ms, the final intensity of the dot was reached on uncoated papers after 1,500 ms. On coated papers, neither the size nor the intensity of the drop reached the final level on the time scale of 1,500 ms.

## References

1. Mähönen, A., Kuusisto, M., Lindqvist, U., Nyrhilä, R., The Splashing of Ink Drops in CIJ Printing. IS&T 13th International Conference on Digital Printing Technologies. pp. 600-603. (1997).

## Biography

Jali Heilmann, M.Sc. (Tech.), works as a research scientist at VTT Information Technology. The author's e-mail address is Jali.Heilmann@vtt.fi.